



PETERHEAD PORT AUTHORITY WASTE MANAGEMENT PLAN

DATE OF AMENDMENTS

[illegible]

INDEX

	Page
Date of Amendments	2
Index	3
References	4
Peterhead Port Authority Waste Management Plan	5
Waste Plan History	5
Legislation	5
Aims, Objectives & Consultation process	6
Information	7
Port Authority Berths	7
Charging Policy	8
Evaluation of Waste Facilities	8
Waste Disposal	9
Reporting Procedure & Inadequacy Reporting Procedures	9
Retention of Waste Details	9
Useful Contact List	10
Location of waste and recycling compounds	11
Types and quantities of waste received	12
Management Of Waste	13
General & Recycling Bin Locations	13-15
Waste Contractors	16 -17
Annex 1 – PETERHEAD WASTE NOTIFICATION FORM	18
Location of berths in Peterhead Bay/Inner Harbour.	19

References

- a. The International Convention on the Prevention of Pollution from Ships (Marpol 73/78)
- b. Merchant Shipping and Fishing Vessels (Port Waste Reception Facilities) Regulations 2003
- c. Port Waste Management Planning, a Guide to Good Practice. MCA Publication April 2004
- d. Merchant Shipping and Fishing Vessels (Port Waste Reception Facilities) Regulations 2003 – Marine Guidance Notes (MGN 563 M+F – replaces MGN 253, 259, 326 & 387)
- e. M Notice 1262 Prevention of Pollution of the Sea by Garbage from Ships and Offshore Installations.
- f. Guidance Notes issued by DEFRA on the Control and Disposal of Catering Waste from Means of Transport Operating Internationally Imported into England.

Background

- 1. The introduction by the Department for Transport of the Merchant Shipping (Port Waste Reception Facilities) Regulations 1997 (SI 1997 No 3018) required every harbour authority for a harbour in the United Kingdom or United Kingdom waters to prepare a Waste Management Plan with respect to the provision and use of prescribed wastes from vessels using the harbour. These regulations are now revoked by the Merchant Shipping and Fishing Vessels (Port Waste Reception Facilities) Regulations 2003.
- 2. The Merchant Shipping and Fishing Vessels (Port Waste Reception Facilities) Regulations 2003 implements the EU's Directive 2000/59/EC on port reception facilities for ship generated waste and cargo residues (SI 2003/No 11809).
- 3. The International Conventions on the prevention of pollution from ships (Marpol 73/78) provide the international framework on how pollution from ships should be managed and require ports to provide waste reception facilities which are adequate and do not cause undue delay to the ships using them.

Peterhead Port Authority Waste Management Plan

Introduction

Peterhead Port Authority is situated in the Northeast of Scotland 35 miles north of Aberdeen and is the most Easterly deepwater harbour on the Scottish mainland. The port incorporates two purpose built logistical support bases serving the North Sea oil and gas fields of the Northern and Central North Sea. Peterhead is also known and accredited as the UK's largest whitefish Port and it is also in the top league in European terms.

Duty of Care

Duty of Care is a statutory requirement under the Environmental Protection Act 1990 which states that all reasonable care must be taken by those to whom this legislation applies to as waste poses a threat to the environment and to human health if not managed, recovered and disposed of safely. In the event that vessels are found to be breaking the law with regards to waste disposal, the port Authority shall report such vessels to the MCA.

Waste Plan History

In 1998 Peterhead Bay Authority in compliance with the Merchant Shipping (Port Waste Reception Facilities) regulations 1997 produced a Port Waste Management Plan for Maritime and Coastguard Agency (MCA).

Peterhead Harbours' Waste Management Plan in compliance with the Merchant shipping (Port Waste Reception Facilities) Regulations 1997 was originally approved in 1998, both plans proved to be appropriate and successful. Peterhead Port Authority was formed on January 1st, 2006.

Legislation

Peterhead Port Authority is to ensure sufficient facilities are available to receive all waste material from vessels using the harbour berths and ensure correct disposal methods are observed.

In reviewing the plan full account has also been taken of the following:

The Environmental protection Act 1990

Merchant shipping (Prevention of pollution by Garbage) Regulations 1998

The Special Waste Regulations

The Merchant Shipping and Fishing Vessels (Port Waste Reception Facilities) Regulations 2003

MGN 563

Animal By Products (Enforcement) (Scotland) Regulations 2011 (as amended)

Aims

To comply in all respects with the Merchant Shipping and Fishing Vessels (Port Waste Reception Facilities) Regulations 2003 to provide users of Peterhead Port with efficient, cost effective and sustainable waste management facilities.

Objectives

To fulfill Peterhead Port Authority's legal duties with regards to waste management.

To consult with users in the development and implementation of waste management strategies and measures.

To minimize production of waste wherever possible.

To aid the re-use or recycling of waste wherever possible.

To dispose of waste in such a fashion that minimizes negative environmental effects.

To promote education and awareness of waste management.

To ensure that all users are aware of the provisions within the Harbour for the reception and disposal of waste from ships, other seagoing vessels and offshore installations.

Consultation

Peterhead Port Authority will consult with stakeholders and other organisations having a reasonable interest in their proper disposal of generated waste. Stakeholders and users will be given the opportunity to comment on the provisions of the current arrangement's prior annual reviews for their views and comments. These consultations will take place at Port Users Group meetings which are held at 6 monthly intervals.

Schedule of Consultation Responses

<u>Date</u>	<u>Respondent</u>	<u>Comments</u>	<u>Proposed Action</u>
19/10/23	Port User Group 6 monthly meeting	Users felt current waste facilities were working well withing the port.	Continue consultation at next user group meeting 10/04/24

Following approval by the MCA, the finalised Port Waste Management Plan for Peterhead Port will be circulated to all consultees and placed on the Ports website.

Information

Responsibility

The Harbour Master is responsible for the implantation of the Waste Management Plan.

Waste Disposal Information for Port users

Information and warnings to dispose of wastes to the Port Reception Facilities are given on information signs around the port. Fish market tallies used by all fishing vessels have printed on the reverse, instructions and information to dispose of their wastes in the correct manner.

PETERHEAD PORT AUTHORITY BERTHS DOMESTIC WASTE - MARPOL Annex V

- a) Tanker Jetty A skip will be provided on the tanker jetty loading head for the reception of vessels' own domestic waste. The uplifted skip is removed to a shore disposal site by a registered waste disposal contractor.
- b) Princess Royal Jetty - Berth No. 1 Non ASCO Ships A skip will be provided on the jetty adjacent to the vessel for the reception of vessels' own domestic waste. The uplifted skip is removed to a shore disposal site by a registered waste disposal contractor.
- c) Marina A mobile waste container (wheelie bin) is situated adjacent to the marina amenity building for the disposal of domestic waste. This bin is emptied as necessary by Aberdeenshire Council Environmental Health Department, or their contractors.
- d) South Breakwater A skip will be provided on the South Breakwater adjacent to any Peterhead Port Authority sponsored vessel for the disposal of vessels' own domestic waste. The uplifted skip is removed to a shore disposal site by a registered disposal contractor.
- e) North Breakwater A skip will be provided on the North Breakwater adjacent to any Peterhead Port Authority sponsored vessel (e.g. Cruise Liners) for the disposal of vessels' own domestic waste. The uplifted skip is removed to a shore disposal site by a registered disposal contractor.
- f) Smith Quay A skip will be provided on the Smith Quay for the reception of vessels' own domestic waste. The uplifted skip is removed to a shore disposal site by a registered waste disposal contractor.
- g) Sir Albert Quay A skip will be provided on the Sir Albert Quay for the reception of vessels' own domestic waste. The uplifted skip is removed to a shore disposal site by a registered waste disposal contractor.
- h) Inner Harbour Skips are provided for general waste and segregated separate bins for oil waste are provided throughout the inner harbour for the reception of domestic waste from vessels. The skips are removed to a shore disposal site by a registered waste disposal contractor.

NON DOMESTIC WASTE - MARPOL Annexes I, II, IV

Peterhead Port Authority Sponsored Vessels at Tanker Jetty/South Breakwater/Princess Royal Jetty, Smith Quay and Sir Albert Quay Reception facilities for vessels' non-domestic waste including dirty oil, tank washings, ballast water, oily engine room bilge water and chemical waste is provided by specialist waste disposal contractors using road tankers. Vessels requiring to dispose of non-domestic waste should make the necessary arrangements through the vessels' agent.

Marina Boat owners who wish to dispose of non-domestic waste such as dirty oil, batteries etc. should make arrangements with the marina manager for its uplift and disposal. There are no pump out facilities for sewage holding tanks.

ASCO BERTHS

DOMESTIC WASTE - MARPOL Annex V Garbage skips for the reception of vessels' domestic waste are provided at ASCO South Base Quay, North Base Jetty and North Base. These skips are emptied each week on a Friday or when full.

NON DOMESTIC WASTE - MARPOL Annexes I, II, IV Reception facilities for vessels' non-domestic waste including dirty oil, tank washings, ballast water, oily engine room bilge water and chemical waste are provided by specialist waste disposal contractors using road tankers. Vessels requiring to dispose of non-domestic waste should make the necessary arrangements through ASCO Agency.

CHARGING POLICY

Peterhead Port Authority is required by the Merchant Shipping and Fishing Vessels (Port Waste Reception Facilities) Regulations 2003 to charge in respect of ships to which these Regulations apply. A standard charge is applied to all vessels to which the Regulations apply using Peterhead Port Authority berths. This charge is reviewed annually and is incorporated into the Peterhead Port Authority Schedule of Charges which is published annually in the Peterhead Port Authority "Information for Masters, Owners and Agents" handbook.

EVALUATION OF WASTE RECEPTION FACILITIES

The daily garbage collection practice of Port employees within the Fishing harbor utilizing Euro Bin/skips, continues to be efficient and is to remain unchanged. In addition to the Euro Bins/skips placed throughout the Fishing Harbour/Jetty, separate bins for Oil waste have been added. These are clearly marked.

Recovered oil is transferred to a holding tank at the Waste Compound and disposed of as and when required.

Leisure Craft/Bay Marina

Waste arising from leisure craft using the Bay Marina is seasonal in nature with a peak occurring during the summer months. The capacity of the wheelie bins has been adequate for the amount of waste deposited. Comments from marina users have indicated that the facilities are easy to use and that the reception and disposal arrangements for waste oil and batteries are widely known.

Publicity given to waste reception facilities is detailed in the Schedule of Charges published annually in the booklet "Information for Ship Masters, Owners and Agents", copies of which are issued to all ships' agencies to distribute to ships visiting Peterhead Port Authority. In addition, the information regarding facilities in the marina is conveyed by the marina manager to visitors when they arrive. Details are also displayed on the marina notice board and published in the marina booklet, a copy of which is given to all visitors and berth-holders.

WASTE DISPOSAL CHARGES, FISHING HARBOUR

Peterhead Port Authority applies charges for entry to all Fishing vessels using the Fishing harbour. The compulsory standard charge is applied to all vessels to which the regulations apply and reviewed annually. These are incorporated in the published Rates and Charges each year.

Additional charges are made for collection and disposal of extraordinary items and special waste produce – such charges are made on a cost recovery basis.

REPORTING PROCEDURE

All vessels visiting the Port of Peterhead (other than fishing vessels and recreational craft carrying 12 persons or less) shall give prior notification of type and quantity of waste they intended to land in Peterhead through their Agent using our waste notification form (annex 1) or if applicable, via the CERS workbook.

Requests and forms should be submitted to the Port at least 24 hours before arrival, or if the voyage is less than 24 hours at latest on departure from the previous port.

Request for waste service may be made on Channel 14 VHF to the Port Control Tower or by telephone to, Harbour Office on 01779 483600.

The UK consolidated European reporting system (CERS) is an information management system which has been developed by the MCA and is the UK's designated method of electronic reporting. Details can be obtained via [The CERS workbook - GOV.UK \(www.gov.uk\)](http://www.gov.uk)

All vessels are required to complete the CERS workbook with the exception of;

- Ships of less than 300 GRT
- Fishing, Traditional, recreational vessels having a length of less than 45 meters
- Warships, naval auxiliaries and other ships owned or operated by the Government of the UK or an EEA state which are used for non-commercial public service.

Retention of Waste Details

Details of waste notified to the port from vessels will be retained by the Port Authority for a 3-year period. Such information will assist with the review of the plan and calculation of the charge for waste facilities.

Inadequacy Reporting Procedures

Where possible, the Master of a foreign flagged ship faced with a lack of reception facilities should bring the alleged inadequacy to the attention of the port authority or berth operator concerned immediately. If the problem is not resolved at the time to the master's satisfaction, then the ship should contact their own flag, who should take appropriate action through the IMO. For further guidance please contact enviroment@mcga.gov.uk

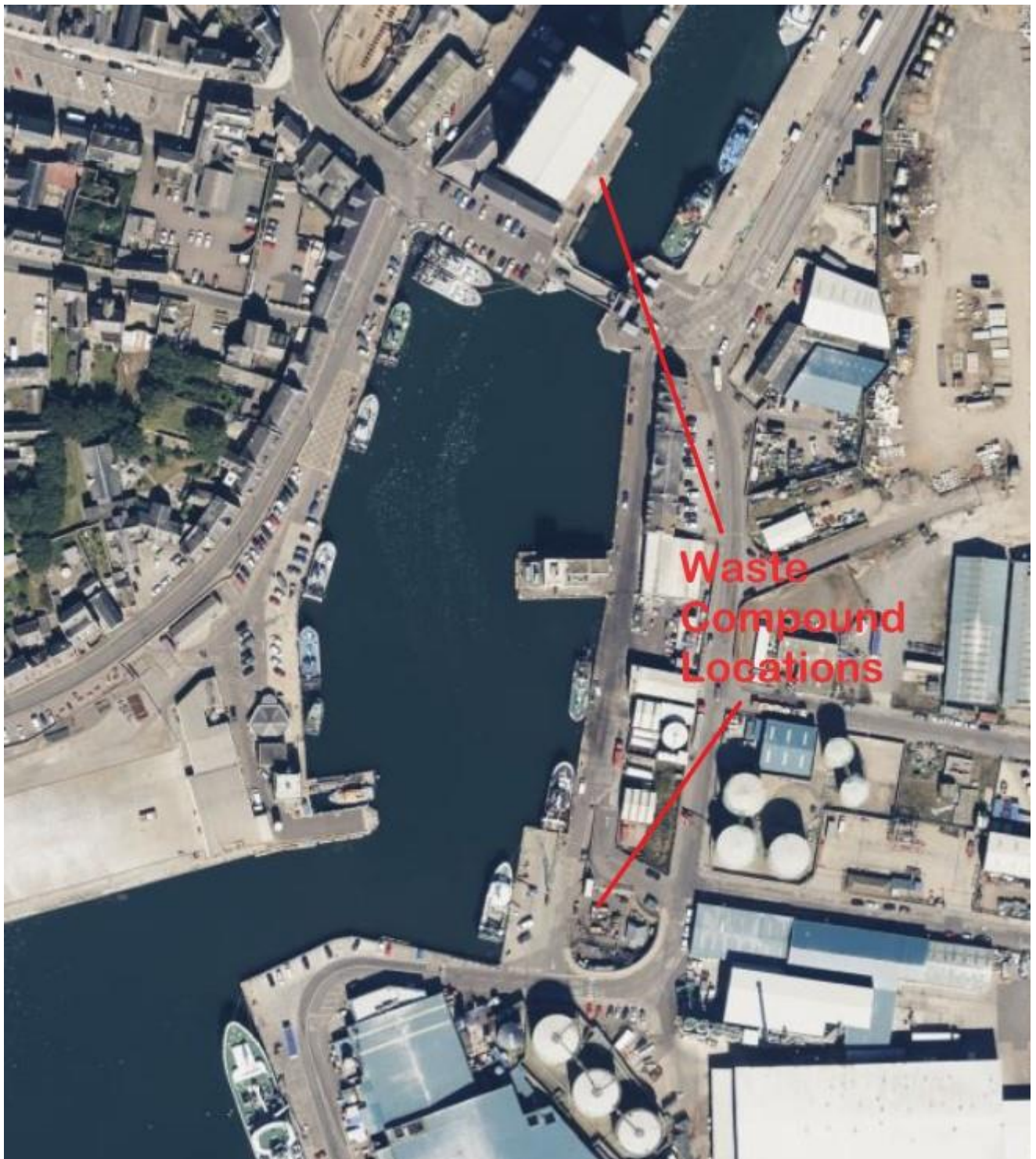
Useful Contact List

- MCA Aberdeen - 01224 592234
- zone3@hmcg.gov.uk
- SEPA - 0800 807060
- SCC@sepa.org.uk
- Marine Scotland - 01224 876544 / 07770 733423
- ms.spillresponse@gov.scot
- Aberdeenshire Council - 01467 539072 / 07831514776
- john.grant@aberdeenshire.gov.uk
- Asco - Aberdeen 01224 890888
- Peterhead 01779 873036
- Norsea - HSE Manager 01779 403555
- Operations Manager 07775 011476
- One stop waste - 01224 782050
- A&M Smith - Aberdeen 01224 780649

- Peterhead 01770 430035

- Taylors Ind Services - 01224 872972

Location of Waste/Recycling Compound



Type And Quantity Of Waste Received

The following table details the type and number of vessels that visited Peterhead Port in 2022.

Vessel Type	Number
Barges	9
General Cargo	45
Coaster	7
DSV	144
Guard Vessels	23
MISC	43
MOD	5
Standby	2
Supply	1444
Survey	4
Tanker	102
Tug	56
Training	3
Fishing fleet	Around 40 regular vessels

Examples of waste types landed to berths operated by Peterhead Port Authority.

Domestic	Operational	Special
Paper	Nets	Oil
Packaging	Maintenance waste (excluding special waste)	Oil contaminated containers and debris
Glass	Wire	Tyers
	Scrap	Electrical equipment
	Dunnage	Paint
		Bilge water
		Batteries

The following table details quantities of waste handled by Peterhead Port in the last 3 years.

Year	General Waste (Kg)	Waste Oil (Ltr)	Other Special waste (Kg)
2023 (Estimate)	700000	90000	3500
2022	616151	86000	3250
2021	554695	76819	2112
2020	448765	53007	1618

Waste retained on board ships using the harbour, for deposit outside the ports/terminals : Nil.

Management Of Waste

Waste Contractors – All vessels waste is collected by or forwarded to an appropriately licensed waste contractor and/ or licensed waste management facility.

Domestic and Operational Waste – Peterhead Port Authority provide covered skips for domestic and operational waste from fishing vessels and other vessels not affiliated to an agent. These are collected and handled by an approved licensed waste contractor.

Vessel Agents - Shipping agents should ensure that the vessels are aware of the relevant sections of this plan and the requirement to complete relevant forms for landing waste ashore. It is for the ships agent to make necessary arrangements with licensed waste handlers to dispose of any waste the wish to land. At the vessel or agents request the Port can make arrangements on their behalf with the relevant waste contractor.

Oil and Oil contaminated Waste – The port provide special bins in strategic locations for the collection of oil/oil contaminated waste. Larger containers for the collection of waste oil are available on request.

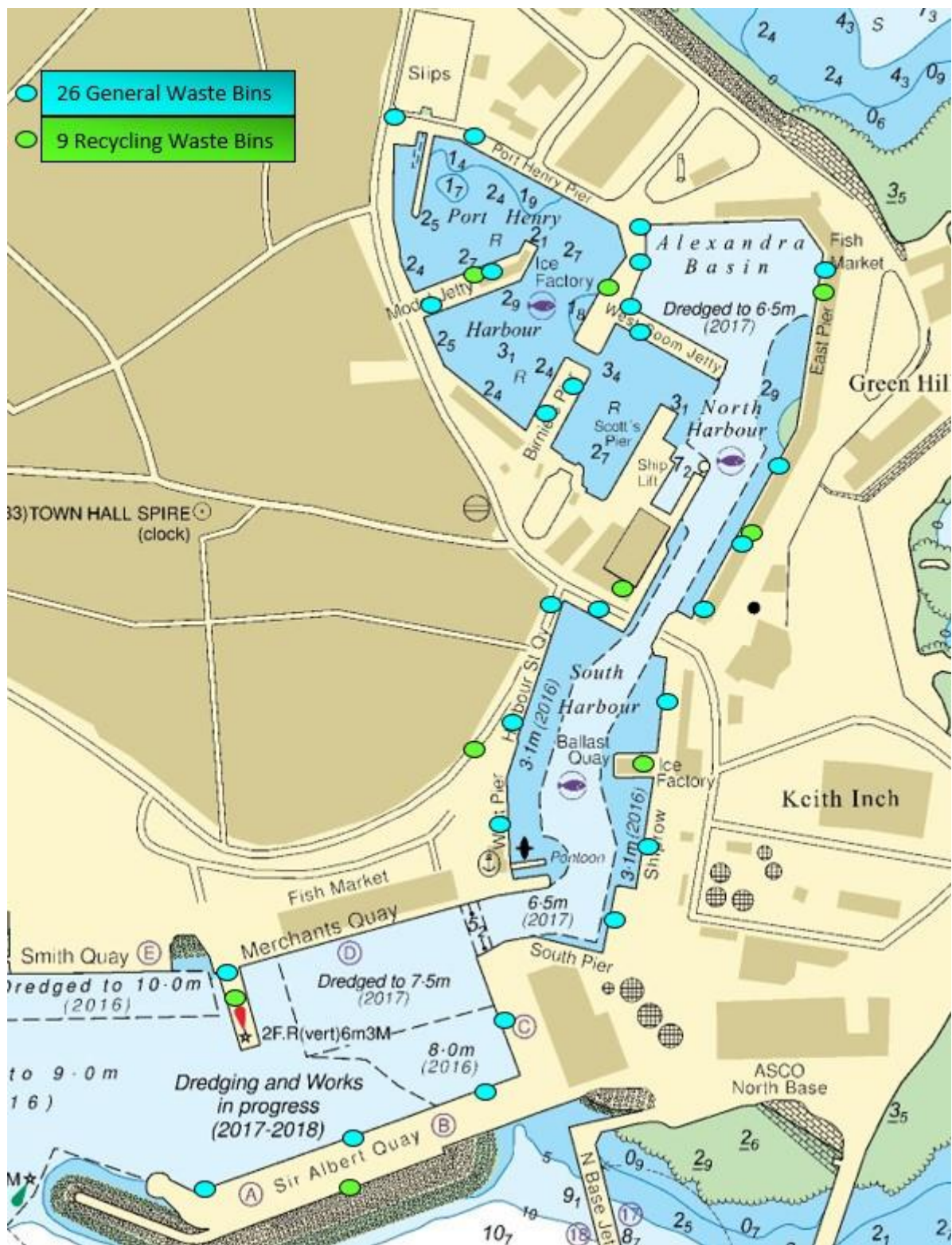
Sewage and International catering waste (ICW) – It is for the vessels or vessel agent to make suitable arrangements for the disposal of sewage. Contact details for approved contactors can be obtained from the Port.

Dunnage / Wood materials - Any vessel planning to land dunnage or WPM which does not meet UK landing requirements in accordance with ISPM15, should make arrangements to have the material disposed of by an approved operator to make it ISPM15 compliant. Any Vessel master/Owner/Agent who requires assistance in the disposal of non-compliant material should contact the Port 24hours prior to arrival where suitable facilities can be provided.

Skip Positions

● - General Waste ● - Recycling Waste

Type	Positions
● ●	West Quay Jetty
● ●	Back Door Office
●	South & West Side South Harbour
●	North & West Side South Harbour
● ●	Outside P & J Office
●	East Side Birnies Pier
●	West Side Birnies Pier
●	South Side Model Jetty
● ●	North Side Model Jetty
●	Burger Van
●	Entrance to Port Henry Marina
●	West Side Port Henry Marina Landing Crane
●	West Side North Birnies
●	West Side West Boom Jetty
●	Middle West Boom Jetty
●	East Side end West Boom Jetty
● ●	Beside the Generator behind Greenhill Fish Market
●	North Side Greenhill
● ●	Middle Greenhill
●	South Side Greenhill
● ●	North Side Caley Box Berth
●	Middle Shiprow
●	Mitchel's Quay
●	East Quay
●	East Side Sir Albert Quay
● ●	Middle Sir Albert Quay
●	West Side Sir Albert Quay



WASTE CONTRACTORS

A & M Smith Skip Hire Ltd

Recycling & Waste Management Central
Upperton Industrial Estate
Peterhead AB42 3GL

Tel: 01779 430035

One Stop Waste Solutions Ltd

Gallowhill
Checkbar
Aberdeen
AB42 4LP

Tel: 01224 782050

Grampian Lifting Services Ltd

10 Backhouse Way Blackhouse Industrial Estate
Peterhead
AB42 1BQ
Tel: 01779 478520 or 07753 722288
www.grampianlifting.co.uk

TWMA

Unit 12
Dales Industrial Estate
Peterhead AB42 3JF
Tel: 01779 472604
www.twma.co.uk

WASTE OIL (ROAD TANKERS)

Taylor's Industrial Services

Harness Circle
Altens Industrial Estate
Aberdeen

Tel: 01224 872972

EMPTY OIL/CHEMICAL DRUMS

Safety kleen Branch

Montrose
Unit 5a
Broomfield Industrial Estate
Montrose
DD10 8SY

Tel: 01674 674126

Northburn Oils Ltd

70 Northburn Road Coatbridge
Lanarkshire ML5 2HY
Tel: 01236 427514
www.northburn.co.uk

OILY WATER/LIQUID WASTE (ROAD TANKER)

ASCO Limited (Damhead)

Technical Waste Management Station
Damhead Yard
Upperton Industrial Estate
Peterhead
Aberdeenshire
AB42 3GL

Tel: 01779 401314

CHEMICAL WASTE

ASCO Limited (Damhead)

Technical Waste Management Station
Damhead Yard
Upperton Industrial Estate
Peterhead
Aberdeenshire
AB42 3GL

Tel: 01779 401314

Taylor's Industrial Services

Harness Circle
Altens Industrial Estate
Aberdeen

Tel: 01224 872972

USED TYRES

A & M Smith Skip Hire Ltd

Recycling & Waste Management Central
Upperton Industrial Estate
Peterhead AB42 3GL

Tel: 01779 430035

Annex 1 – PETERHEAD WASTE NOTIFICATION FORM

RECORD OF SHIPS WASTE LANDED OR STORED ABOARD

ETA Peterhead		Vessel	
From		Master/Duty Officer	

- To comply with UK legislation, this form **must** be completed and given to the Agent/Port prior to arrival.
- Garbage must be stored/kept in sealed, heavy duty, plastic bags until the vessel arrives in Peterhead. On arrival in Peterhead the Captain of the vessel, or the agent for the vessel, shall contact the Control Tower, or an official of Peterhead Harbour, who shall arrange for the garbage to be collected and placed in skips provided under Peterhead Harbour Waste Management Plan, location of these as per harbour drawing.
- Disposal into the skips of oil, oil/chemical drums, gas bottles, any asbestos products, noxious liquid substances, marine pollutants in packaged form and some non-polluting liquids as defined or listed in the annexes of the Marpol Convention, is prohibited. Arrange disposal of these directly to an approved shore contractor via your agent.
- Other materials/items; if in doubt **do not** place in skip. Contact agent for advice.

Type of Waste	Black Bags No./Wt (kg)	Tonnes	Road Tanker	Skip	Other

RECORD OF WASTE STORED FOR DISCHARGE AT OTHER PORT

Type	Tonnes/kg	Port	Country

Departure Date		To Port	
----------------	--	---------	--

Master/Duty Officer (signature)	
Form issued/collected by (signature)	

Location of berths(ringed in purple) of Peterhead Bay/Inner Harbour.

